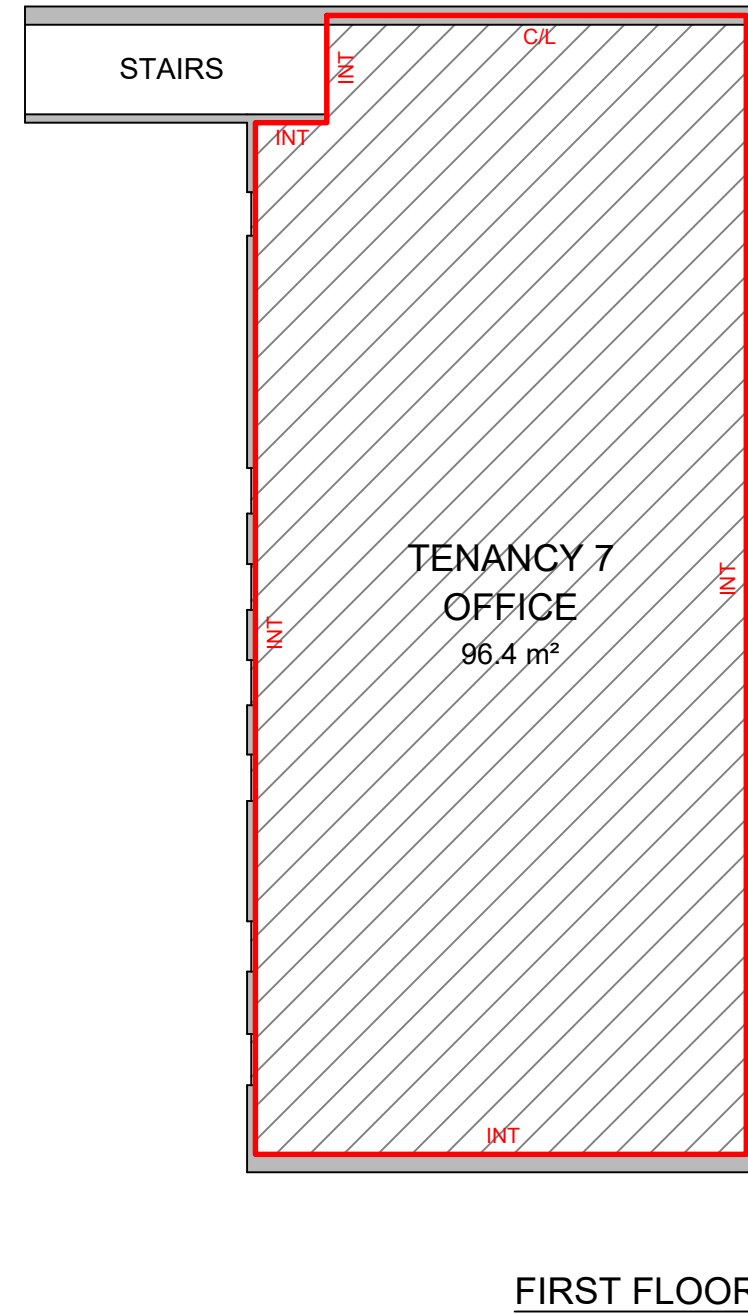
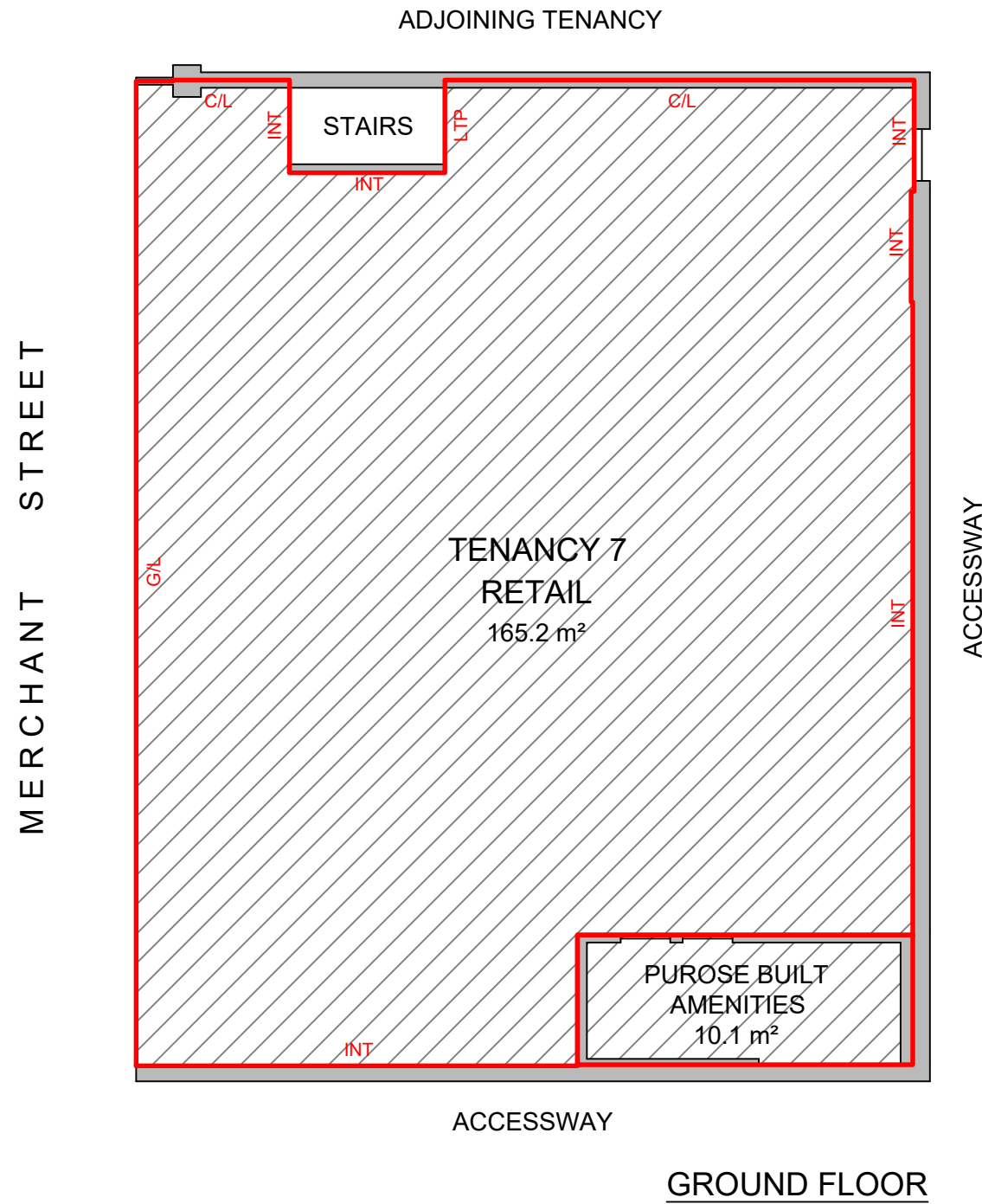
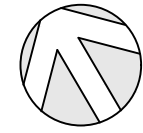
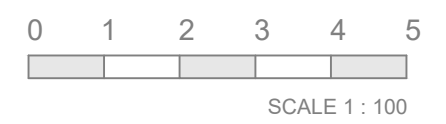


# LETTABLE AREA PLAN FOR TENANCY 7, 818 BOURKE STREET, MELBOURNE, VIC



SCHEDULE OF AREAS	
GROUND FLOOR	
RETAIL	165.2 m <sup>2</sup>
AMENITIES	10.1 m <sup>2</sup>
FIRST FLOOR	
OFFICE	96.4 m <sup>2</sup>
<b>TOTAL AREA</b>	<b>271.7 m<sup>2</sup></b>
LETTABLE AREA	
METHOD OF MEASUREMENT	
AREAS HAVE BEEN CALCULATED IN ACCORDANCE WITH THE PROPERTY COUNCIL OF AUSTRALIA (PCA) METHOD OF MEASUREMENT FOR LETTABLE AREA (MARCH 1997)	
(SURVEY DATE 09/03/2016)	
GUIDELINES USED	
GROSS LETTABLE AREA RETAIL	



INT - INTERNAL FACE  
 EXT - EXTERNAL FACE  
 C/L - CENTRELINE WALL  
 G/L - GLASS LINE  
 LTP - LINE OF TENANCY PRODUCED

PLAN PREPARED FOR:  
**CBRE**

**LETTABLE AREA PLAN**  
**TENANCY 7, 818 BOURKE ST**  
**MELBOURNE, VIC**

DATE: 15/03/2016  
 REF: 59074 REV: 0  
 DRAWN: AS CHECKED: IN  
 SCALE: 1:100 @ A3 SHEET: 1

sydney canberra **melbourne** brisbane adelaide perth  
**REALSERVE**  
 Real Estate Plans & Surveys  
 P 03 9415 6565  
 F 03 9923 6307  
[www.realserve.com.au](http://www.realserve.com.au)