



**25 GRENFELL
STREET**

Suite 302



AUSTRALIA
RMET

LG
ENERGY STAR
10

Suite 302 floor plan

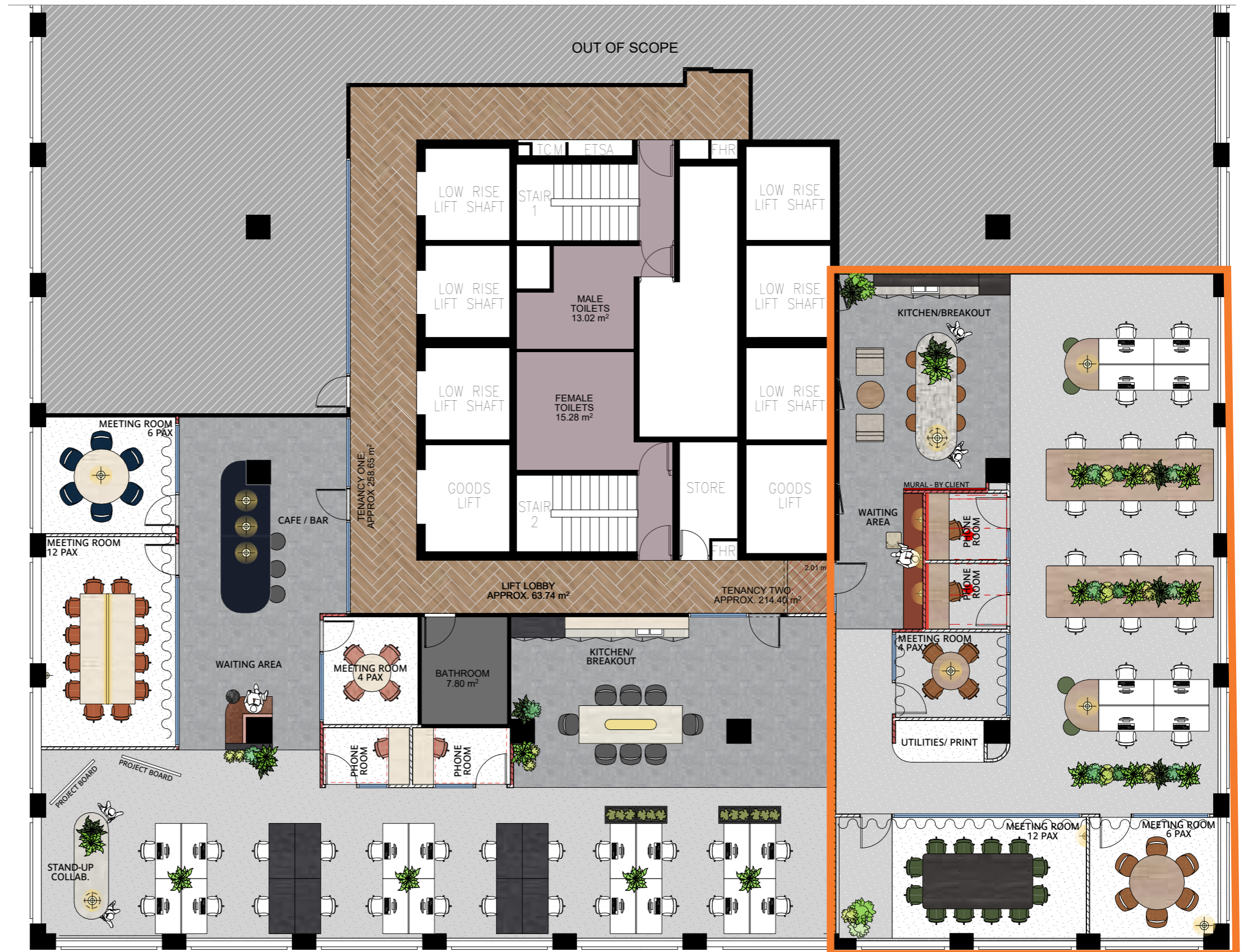
NLA: APPROX 225m²

DENSITY: 20

1:10m²

Waiting area	1
Meeting room 12 pax	1
Meeting room 6 pax	1
Meeting room 4 pax	1
Kitchen/breakout	1
Phone room	2
Stand-up collaboration	1
Workstations	20

Floorplan is indicative only.



SUITE 302







**25 GRENFELL
STREET**

For current leasing availability including
floor details and contact details

[CLICK HERE](#)



Confidentiality - The terms of this lease proposal and the negotiations between the parties are strictly confidential. Disclaimer - This report has been prepared by Centuria Property Funds (ABN 11 086 553 639) (Centuria) and does not constitute a contract of sale or lease. It is intended only as a guide and an aid to further investigation by the prospective tenant. Prospective tenants accept this document on the condition that they will make their own enquiries and obtain their own independent advice in order to verify the accuracy of the information presented in this document. The content of this document has been derived, in part, from sources other than Centuria and may be based on assumptions. In passing this information on, Centuria does not warrant that such information or assumptions are accurate or correct. Parties should seek their own independent verifications and advice on such information. To the extent that this document includes any statement as to a future matter, that statement is provided as an estimate and/or opinion based upon the information known to Centuria at the date of preparing this document and assumptions which may be correct.

Centuria