

1 2 3 4 5 6 7

**NOTE**  
 All dimensions to be verified prior to commencement of any shop drawings or fabrication. Shop drawings are to be approved before construction. All dimensions are in millimeters unless otherwise noted. Annotated dimensions are to be used in preference to scaling from drawings. This drawing is the property of ANTHONY VAVAYIS + ASSOCIATES PTY LTD and any reproduction or distribution without prior consent constitutes a breach of copyright.

**LEGEND**

NO WORKS, TO RETAIN EXISTING

FUTURE EXPANSION

**FIRE COMPARTMENTATION**

SMOKE + FIRE 120/120/120

SMOKE + FIRE 60/60/60

SMOKE

A

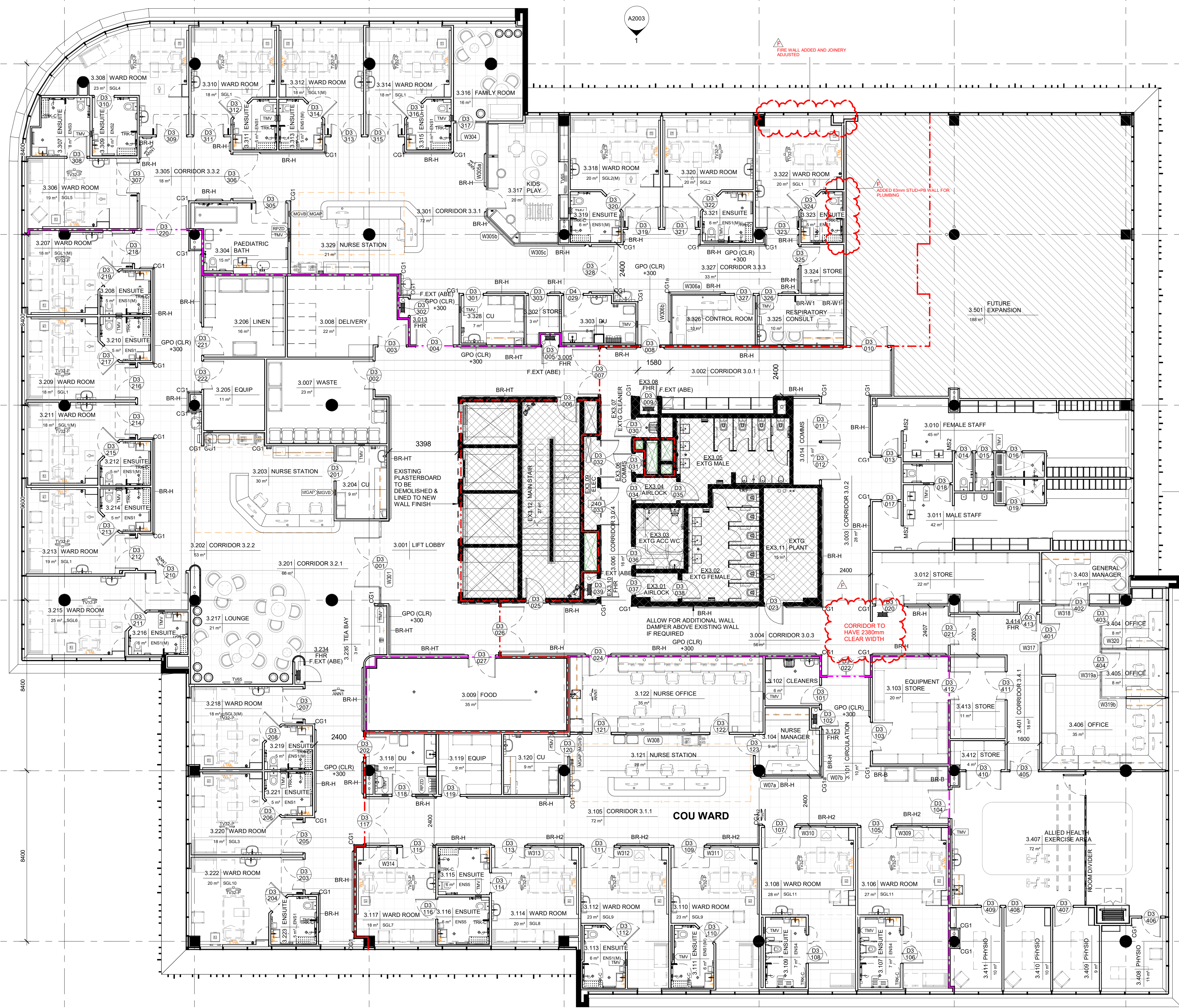
B

C

D

E

F



REV	DATE	DESCRIPTION
F	2020.12.21	CONSTRUCTION UPDATES
E	2020.10.12	ISSUE FOR CONSTRUCTION (RD PLANT REVISION)
D	2020.09.28	ISSUE FOR CONSTRUCTION
30	2020.07.02	ISSUE FOR TENDER ADDENDUM (RESOLVE PT CLASH AT 3.216 ENS)
29	2020.06.25	ISSUE FOR TENDER ADDENDUM
28	2020.06.19	ISSUE FOR TENDER ADDENDUM
27	2020.06.15	ISSUE FOR TENDER ADDENDUM
C	2020.05.09	CONSULTANTS COORDINATION OF DCN REVISION
B	2020.05.02	ISSUE FOR CC
A	2020.05.21	FOR CONSTRUCTION - HYDRAULIC PENETRATION COORDINATION
26	2020.05.11	ISSUE FOR TENDER
25	2020.05.07	ISSUE FOR FINAL CO-ORDINATION
24	2020.05.05	CONSULTANTS CO-ORDINATION
23	2020.04.24	CONSULTANTS CO-ORDINATION (W/P)
22	2020.04.23	CONSULTANTS CO-ORDINATION (W/P)
21	2020.04.17	CONSULTANTS CO-ORDINATION (W/P)
20	2020.04.08	ISSUE FOR CLIENT APPROVAL
19	2020.04.08	ISSUE FOR CC APPLICATION
18	2020.04.07	CONSULTANTS CO-ORDINATION
17	2020.03.27	CONSULTANTS CO-ORDINATION
16	2020.03.27	CONSULTANTS CO-ORDINATION
15	2020.03.23	ISSUE FOR TENDER
14	2020.03.19	ISSUE FOR TENDER
13	2020.03.03	CONSULTANTS COORDINATION
12	2020.02.28	CONSULTANTS COORDINATION
11	2020.02.28	CONSULTANTS CO-ORDINATION
10	2020.02.18	CONSULTANTS CO-ORDINATION
9	2020.02.14	CONSULTANTS CO-ORDINATION
8	2020.02.12	CONSULTANTS CO-ORDINATION
7	2020.02.10	BEA COORDINATION
6	2020.02.04	CONSULTANTS CO-ORDINATION
5	2020.01.30	CONSULTANTS CO-ORDINATION
4	2020.01.29	CLIENT REVIEW
3	2020.01.27	CONSULTANTS CO-ORDINATION
2	2020.01.21	BEA REVIEW
1	2020.01.14	EQUIPMENT CO-ORDINATION

**REVISION**

**ANTHONY VAVAYIS + ASSOCIATES**  
 ARCHITECTS DESIGNERS PLANNERS

24 LIME STREET KING STREET WHARF  
 SYDNEY NSW 2000  
 E: admin@avaarchitects.com.au T: 02 9290 1810  
 W: www.avaarchitects.com.au

P: 20/26A LIME STREET KING STREET WHARF  
 SYDNEY NSW 2000  
 ANTHONY VAVAYIS + ASSOCIATES PTY. LTD.  
 ACN 069 737 935

NSW NOMINATED ARCHITECT - ANTHONY VAVAYIS NO.5243

**PROJECT TITLE**

L3-L4, 1521 Forest Road, Orange NSW

**CLIENT**

ORANGE PRIVATE HOSPITAL  
 PTY LTD

**DRAWING TITLE**

GA - Level 3

**SCALE @ A1 As Indicated DATE** SEP 2019  
**DRAWN BY DL PROJECT** 20206

1 GA - Level 3  
 1:100

A1002 F