

**619**  
**Murray Street**



Current leasing  
availability

[CLICK HERE](#)



ARTIST IMPRESSION



619 Murray Street is located in the vibrant office precinct of West Perth approximately 2km west of the Perth CBD.

Comprising a total 3,984sqm of net lettable area and in excess of 60 car bays, the building presents a unique but functional floorplate of approx. 1,328sqm, wrapping around a central courtyard.

The courtyard creates an exclusive space for tenants and allows natural light to penetrate the internal façade on each floor.

The building is well suited to whole-building tenants or the floors can be readily subdivided into quality tenancies of approx. 600sqm.

The location offers accessibility to local West Perth amenities including Gordon Street Garage and Watertown, while still being a short walk to the Perth CBD. This location is serviced by City West and Perth train stations and various bus routes, including the free CAT buses.

The building is currently undergoing a major refurbishment due for completion in mid 2024.





# Building refurbishment

A single tenant had previously occupied the entire building for over a decade before vacating in 2022.

The building has since been undergoing a significant refurbishment, which will ultimately see a total investment of in excess of \$5 million into the asset.

Works are underway with practical completion anticipated for March 2024.

## Building upgrades include:

### Stage 1 (PC in July 2024)

- New façade
- New lobby
- Refurbished entry statement
- Refurbished courtyard
- On-floor lift lobbies and bathrooms
- On-floor mechanical services

### Stage 2

- End of Trip Facilities in the basement







ARTIST IMPRESSION



# Location

## Cafes

- 1. Little Gordon St
- 2. Mesh
- 3. The Hayes
- 4. Cherry & Grapes
- 5. Café 1983
- 6. QV1 Plaza
- 7. Mr Sandwich

## Bars and restaurants

- 8. BrewDog (coming soon!)
- 9. Gordon St Garage
- 10. Royal India
- 11. Phat Brew Club
- 12. The Melbourne Hotel

## Retail

- 13. Watertown Centre

## Public Transport

### Train:

500 m  
City West

1.2 km  
Elizabeth Quay

1.1 km  
Perth Station

1.3 km  
Leederville Station

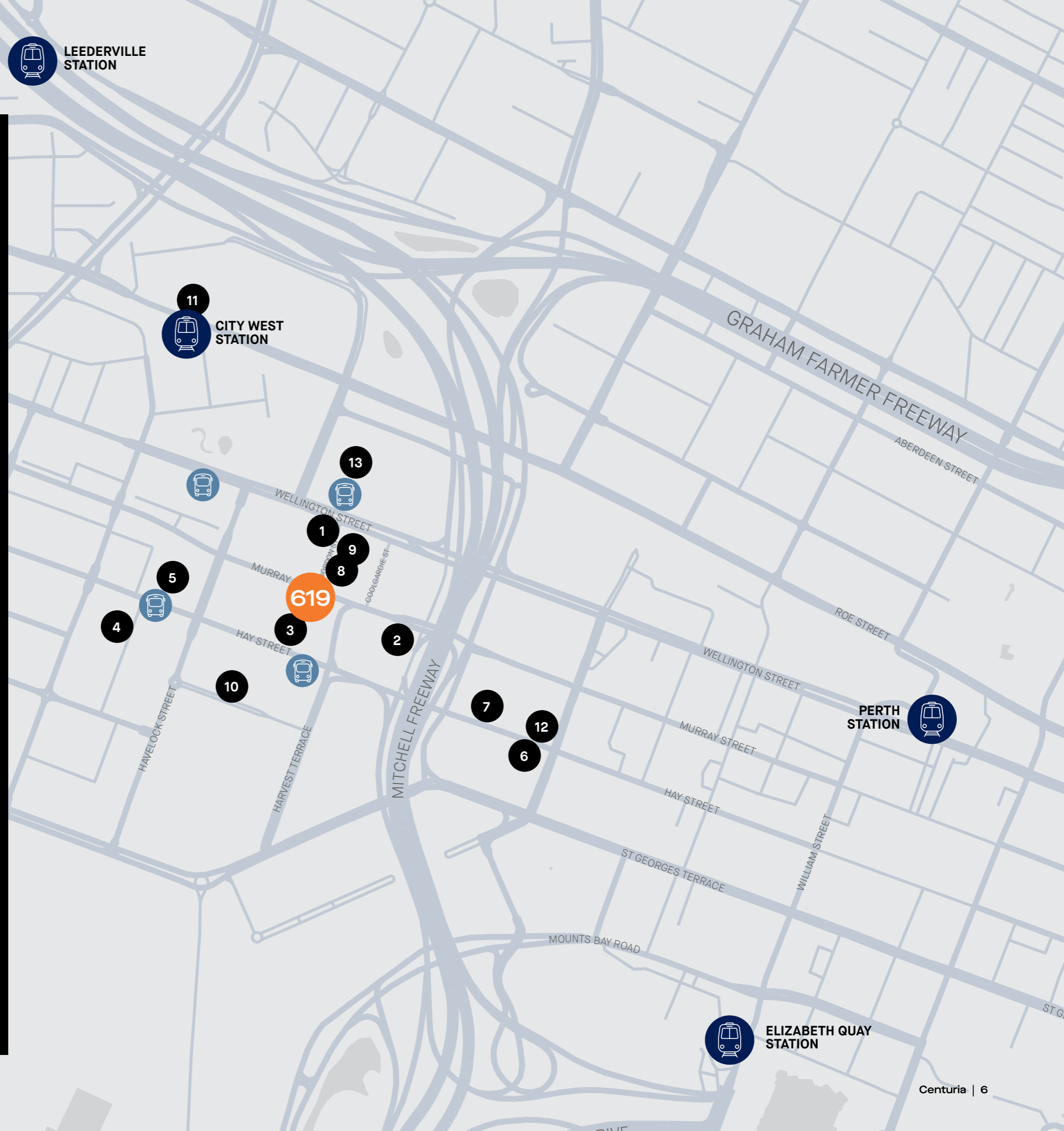
### CAT Bus

130 m  
Hay St Parliament Red  
CAT 15

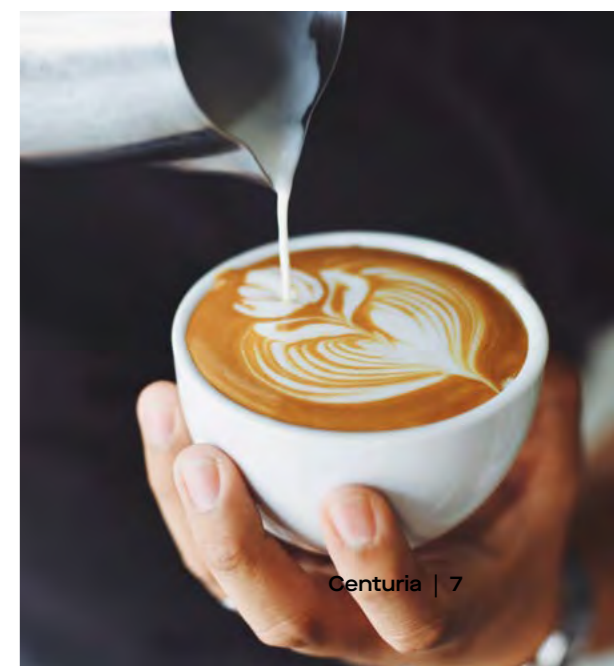
300 m  
Wellington St Sutherland St  
Yellow CAT 22

300 m  
Hay St Emerald terrace  
Red CAT 16

300 m  
Wellington St Harold Boas  
Gardens G14/Y18











CENTRAL PARK

BROOKFIELD PLACE

ELIZABETH QUAY

SWAN RIVER

KWINANA FREEWAY

KINGS PARK

PERTH UNDERGROUND

MELBOURNE HOTEL

QV1 PLAZA

ST GEORGES TERRACE

GOVERNMENT HOUSE

MITCHELL FREEWAY

MURRAY STREET

619  
Murray Street



# Full floor fit out plan

129

Total work points

1,328

Approximate sqm

10.30 sqm

per person

	QTY	STAFF
Boardroom - (12 person)	1	
Meeting room - (4 person)	1	
Meeting room - (6 person)	4	
Huddle room - (4 person)	2	
Focus room	3	
Reception - waiting area	1	1
Workstations (1800mm)	125	128
Kitchen / breakout lounge	2	
Collaboration lounge	1	
Utilities / store / comms	2	

Floorplan is indicative only.





ARTIST IMPRESSION







ARTIST IMPRESSION



# Half floor fit out plan

57

Total work points

667

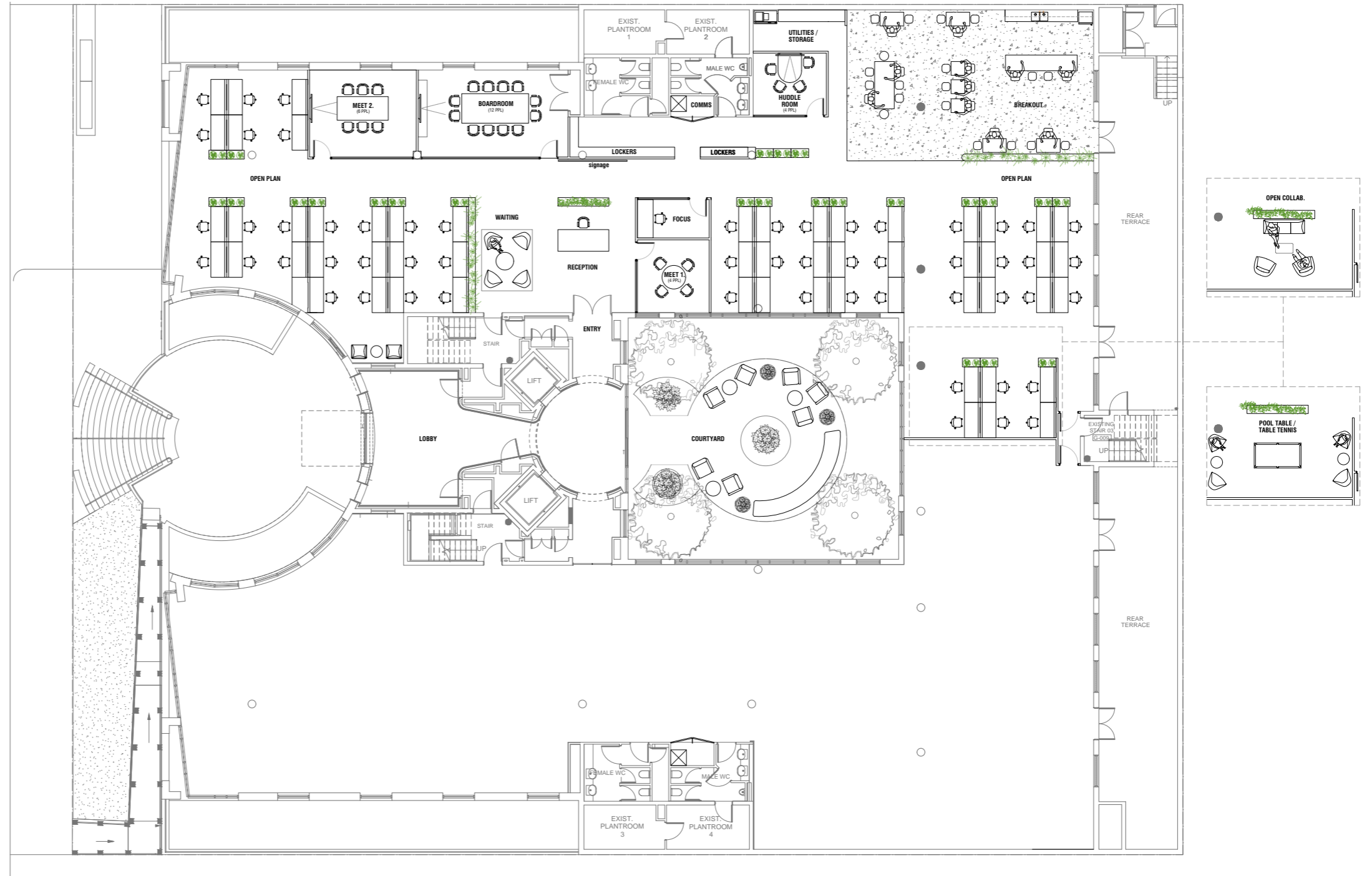
Approximate sqm

11.07sqm

per person

	QTY	STAFF
Boardroom - (12 person)	1	
Meeting room - (4 person)	2	
Meeting room - (6 person)	1	
Huddle room - (4 person)	2	
Focus room	2	
Reception - waiting area	1	1
Workstations (1800mm)	56	56
Kitchen / breakout lounge	1	
Collaboration lounge	1	
Utilities / store / comms	2	

Floorplan is indicative only.







ARTIST IMPRESSION



ARTIST IMPRESSION





**619**  
**Murray Street**

**CBRE**

**Colin Gilchrist**

M: 0410 336 241

E: colin.gilchrist@cbre.com.au

**Jordan Fitzgerald**

M: 0407 971 997

E: jordan.fitzgerald@cbre.com.au

 **JLL**

**Mitchell White**

M: 0411 055 544

E: mitchell.white@jll.com

**Dane Hollingworth**

M: 0417 770 983

E: dane.hollingworth@jll.com

Confidentiality - The terms of this lease proposal and the negotiations between the parties are strictly confidential. Disclaimer - This report has been prepared by Centuria Property Funds (ABN 11 086 553 639) (Centuria) and does not constitute a contract of sale or lease. It is intended only as a guide and an aid to further investigation by the prospective tenant. Prospective tenants accept this document on the condition that they will make their own enquiries and obtain their own independent advice in order to verify the accuracy of the information presented in this document. The content of this document has been derived, in part, from sources other than Centuria and may be based on assumptions. In passing this information on, Centuria does not warrant that such information or assumptions are accurate or correct. Parties should seek their own independent verifications and advice on such information. To the extent that this document includes any statement as to a future matter, that statement is provided as an estimate and/or opinion based upon the information known to Centuria at the date of preparing this document and assumptions which may be correct.

**Centuria**